

CCISOBUS *evolution*



CCISOBUS

Manufacturer-independent | integrated | comprehensive | open



CC-ISOBUS Contents

• CCI100/200 – the ISOBUS terminal.....	page 04
• Interfaces – for integrated processes.....	page 06
• CCI.Apps – simply more functionality.....	page 08
• Precise work ...on any field with GPS.....	page 10
• Perfect planning ...from seed to harvest.....	page 12
• Direct documentation ...it has never been this easy!.....	page 14
• Precise farming and useful little helpers.....	page 16
• CCI.Control Mobile – the innovation.....	page 18
• Our goal – 100% compatibility.....	page 20
• CCI classes – practice and knowledge.....	page 22

I am excited to present to you the 3rd edition of our brochure about our current ISOBUS products and services. Among them are many are old acquaintances, which we advanced carefully and sensibly, all according to our title: evolution.

But our range of 2013 also features some interesting novelties, with the help of which we would like you – our customer – to be a part of the positive aspects of the still rapid progress that agricultural technology makes.

All of this corresponding to our goal of manufacturer independence and always with the customer in mind.

The CCI-Terminal has been made more powerful on the inside, and more ergonomic on the outside so that it is prepared for future challenges and requirements. Some new and useful additions have been made to CCI.Apps, the software collection for our terminal.

Furthermore, with the Agritechnica 2013 coming up, we present a study on a data management app for tablets and smartphones. CCI.Control Mobile determines the manufacturer independent possibilities of the application of portable end devices in the tractor cab. We are looking forward to your feedback.

I would like to call special attention here to our educational program, which we decided to continue in 2014 in an amended form after the very positive progress of last year: specific to target groups, close to practice, and, if you like, on site!

To finish on a more personal note: in February 2014, the CCI will celebrate its 5th birthday at our new facilities. With our 19 current members and 8 employees, we will continue our work toward our goal of manufacturer independent and practicable solutions.

My team and I are already looking forward to the next five years of successful cooperation!

Yours faithfully,
T. Dzinaj



FOREWORD

CCI100/200 – the ISOBUS-Terminal

Ergonomic design and functionality

- Developed by practitioners for practical use
- Certified ISOBUS-Terminal
- One-handed operation by swapping of softkeys
- Rotary encoder for efficient setpoint entry
- Bright 8,4" touchscreen colour display
- Function buttons for reliable operation in rough terrain
- Ambient light sensor for automatic adjustment of display brightness
- "Toggle-key" for direct access to apps or machine interface
- Maximum number of interfaces (see next page)
- Additional comfort functions available (e.g. joystick, click bar)



CCI 200



A 10

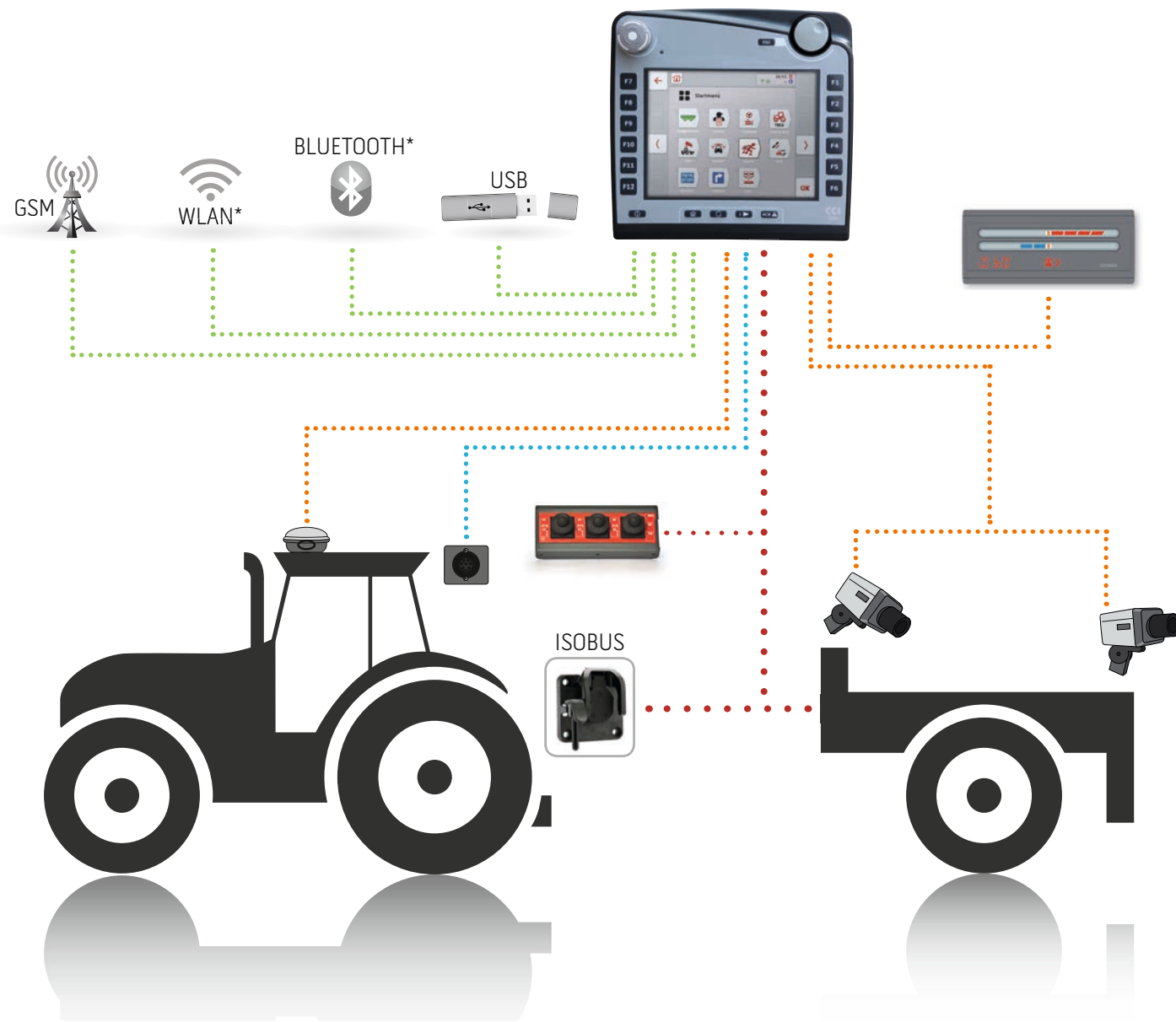


A 20

Interfaces – for integrated processes



Efficient use of machinery requires integrated processes —
Integrated processes require a terminal with many interfaces



ISOBUS

- Simply connect machines, a second terminal or additional control unit (e.g. a joystick) to the ISOBUS
- for cross-manufacturer machine operation and data transfer.

Wireless data exchange

- Data exchange at smartphone level. In addition to the standard USB-interface the CCI200* offers both bluetooth and WiFi. Mobile connectivity is easily achieved with the optional GSM-modem. Thus, comfortable data exchange is always possible.

Signal socket

- While not all tractors are equipped with ISOBUS, most of them come with a signal socket. The CCI-Terminal makes use of this to determine driving speed, PTO speed and linkage position and then shares the data with all other applications in the ISOBUS network: area-counter, speed-related control of spread rate in fertilization and crop protection, to name only a few.

And more...

- The CCI-Terminal also provides interfaces for GPS, video-cameras and an external light bar.

*starting at hardware generation 2.0



CCI.Apps

CCI.Apps – easily upgradeable



Customized

With CCI.Apps it's easy to add features to your CCI Terminal and customize it according to your needs. Already a multitude of apps is available, some of which are free of charge and part of the standard delivery.



Comprehensive

Benefit from our broad and constantly updated range of products. From visual machine control to task management with ISOBUS-documentation – a wide selection of apps, ranging from useful little helpers to comprehensive tools is available.



Future-oriented

Add apps later? No problem! Your dealer determines the activation code using the CCI Service-Portal. After entering it into the terminal, the app is instantly operational. Simply add new apps and benefit from our future developments.

CCI.Apps

Terminal



CCI.Command



CCI.Convert



CCI.Courier



CCI.farmpilot



CCI.Control



CCI.FieldNav



CCI.TECU



CCI.Weather

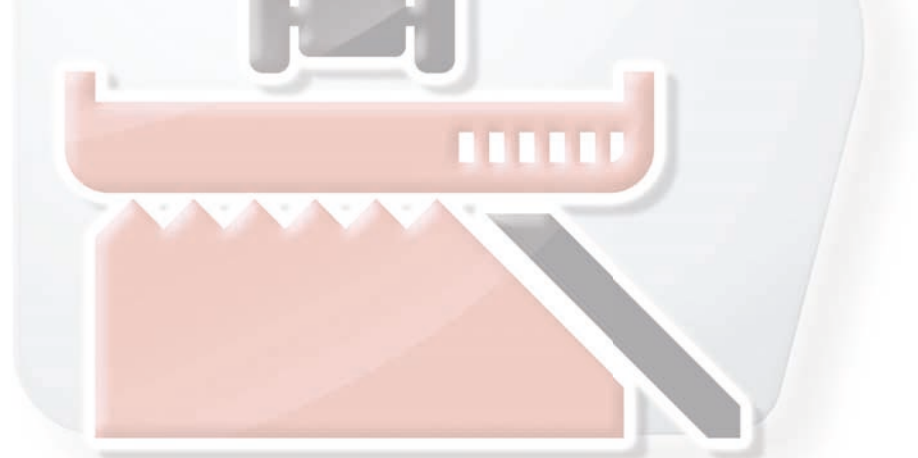


CCI.Cam

Tablet/Smartphone



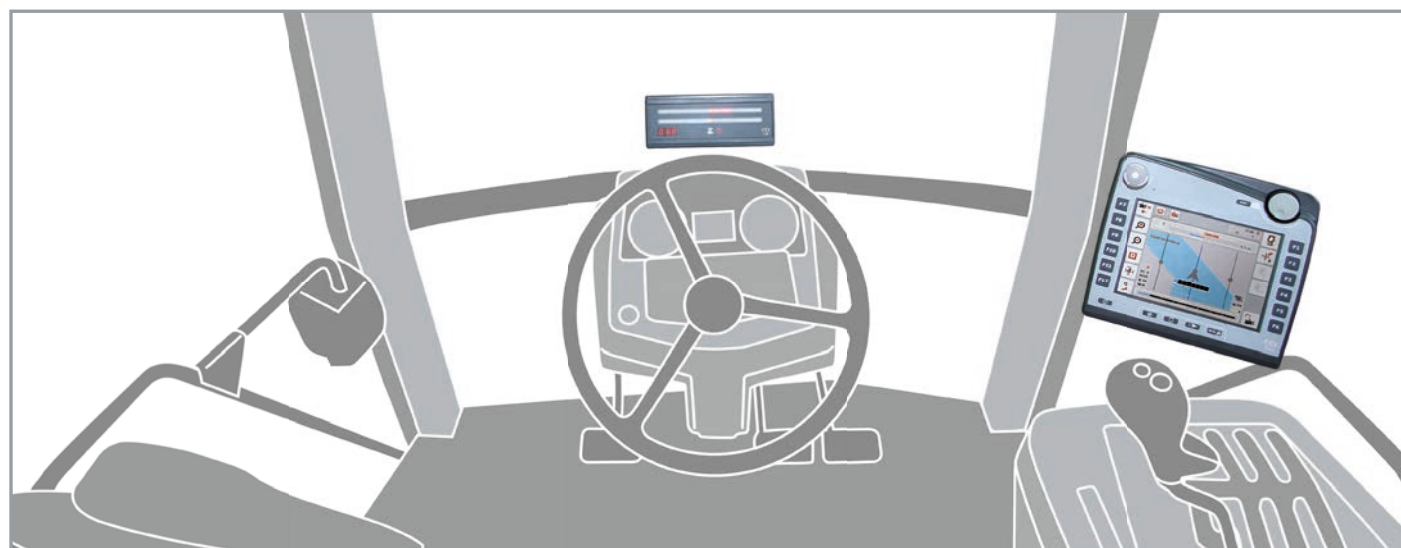
CCI.Control
Mobile



Precise work ...on any field with GPS

The best co-pilot you've ever had

Using GPS, CCI.Command identifies the right track and automatically switches sections of ISOBUS machines. That's a relief and saves resources – for a more efficient work on the field.



Module: parallel tracking

Parallel tracking makes it easy to drive the next bout precisely in poor visibility or on fields without tramlines. The distance to the navigational line and a steering suggestion are displayed on the Terminal or via *LTO* on the windshield right in your field of vision.



Module: section control

Using GPS, *section control* switches the part-width sections automatically in many machines. That is comfortable and saves resources – for more efficient work on the field. The precise settings are carried out automatically via ISOBUS communication.



Module: headland mode*

Simply draw your individual headland on the Terminal. When applying plant protection and when sowing the part-width section are switched precisely at the headland. This way, there won't be overlap of worked areas.



Advantages on the field

Benefit from versatile applications. *CCI.Command* was developed by experts from different fields of agricultural engineering. The intelligent software is fine tuned to support the full spectrum of usages. Saving resources and material while enhancing comfort – *CCI.Command* supports you all the way from seed to harvest.



Seed Drills



Planter (Maize/Sugarbeet)



Planter (Potatoes)



Fertilizer Spreader



Sprayer



Mower



Swather



Universal Spreader

**pre-series spring 2014*



Perfect planning ...from seed to harvest

Team work for maximum efficiency.

Short harvest seasons, difficult weather situations, and high standards of work quality – these are the challenges for major agricultural businesses and contractors.

For a maximum of area output at low costs everyone has to know exactly what he is doing.

With CCI.farmpilot, CCI.Control, and CCI.FieldNav we have the most productive tools the CCI-Terminal has to offer – the best addition to your team.



CCI.farmpilot – the connection

Farmpilot is the control centre for contractors and farmers. CCI.farmpilot is constantly connected to the portal via the internet. At any time, CCI-Terminal and the portal can exchange task data, as well as individual positions and machine data.



the connection to the portal



CCI.Control – the office on the field

The map overview displays all imported tasks on one screen. The driver decides which field he plans to work on next with just one “click”. CCI.Control saves your ISOBUS machine data for a comprehensive documentation.



task overview with CCI.Control



CCI.FieldNav – the navigation

Using this navigation tool, even drivers unfamiliar with the terrain will find their ways to the field. CCI.FieldNav considers all routes on which the respective machine can travel. When the fleet is at work, the other vehicles' current position is displayed.



navigating farms and fields



Direct documentation ...it has never been this easy!

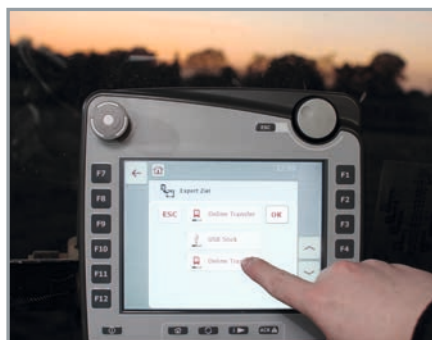


The work on the field is back in the foreground

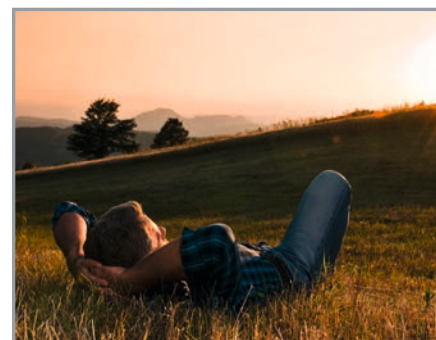
Documented and wirelessly exchanged at the push of a button – the comfortable solution for all agricultural businesses.



1. Work the field



2. Push the button



3. Documentation done ✓



CCI.Control: documentation compliant to the ISO-XML format to import to your farm management software, and as a pdf-report ready to be printed.

CCI.Courier: wireless data exchange via WiFi or mobil communications using largely free means of communication such as e-mail, ftp, or Dropbox.

CCI Control Report

CCI.Control Report

Task

Name of Task: fertilisation BRUCH

Counters

Total Time	00:47:34
Fertiliser	
Total amount	4350 kg
Total area	7.83 ha
Total distance	3262.5 m
Total time	16:21 Minuten

Customer

Meier, Helmut	
Hauptstraße 32	0541-123456
49090	0171-87654321
Osnabrück	

Farm

CCI	
Zum Gruthügel 8	Meier
49134	
Wallenhorst	

Field

Bruch	
74076 m²	Winterraps
Meier	Talent
CCI	

Device

Fertiliser

Created by CCI Terminal (2013.07.31 15:32:23)

1.

Precise farming and useful little helpers



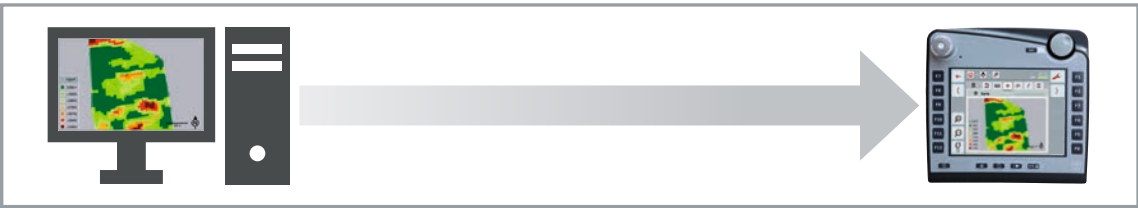
CCI.Control and CCI.Convert

Using application maps and online sensors, precise crop farming is possible. CCI.Control and CCI.Convert enable data exchange via ISOBUS – a maximum of flexibility achieved through manufacturer independent communication.



VRA Control:

Part area specific sowing, fertilizing, and spraying using application maps.

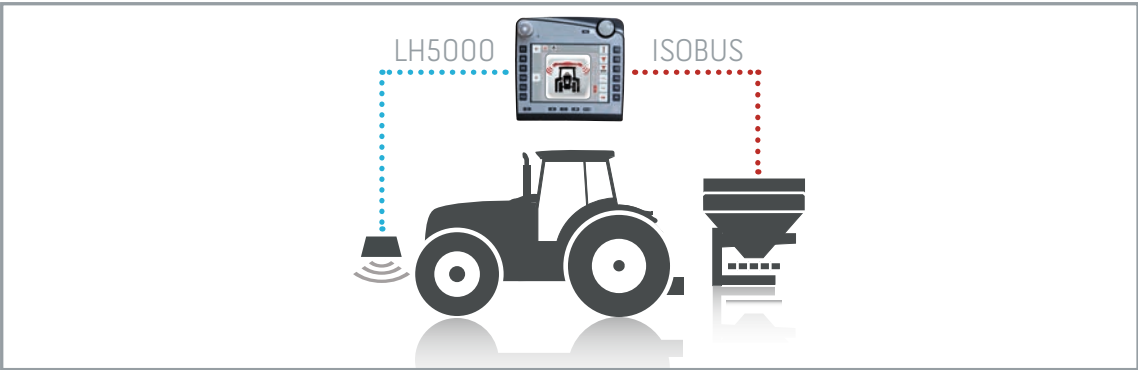


VRA Control is part of the full range of features of the app CCI.Control.



CCI.Convert:

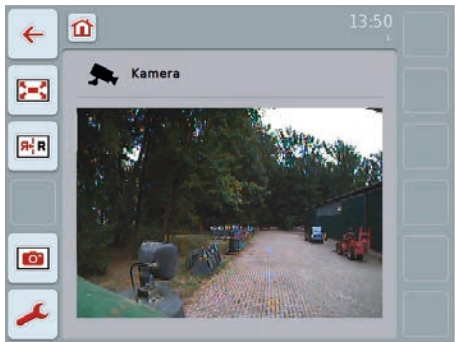
Convert the LH 5000 signal from online sensors into ISOBUS messages the machine can read.



CCI.Convert works independently or together with CCI.Control and CCI.Command.



CCI.TECU – tractor data



CCI.Cam – the camera app*



CCI.Weather – weather forecast**

* With an additional multiplexer you can connect up to 8 cameras
** Internet connection is required



CCI.Control Mobile

CCI.Control Mobile – the innovation



CCI study for Agritechnica 2013

Manufacturer independent recording of (ISOBUS-)machine data and online data exchange and field navigation brought together for the first time. A standardized system for tractors, implements, and self-propelled vehicles.



Portable

Agricultural data management in its most versatile form. As an app for smartphones and tablets, you can use *CCI.Control Mobile* in the tractor's or the self-propelled vehicles cab and for tasks outside.

Networked

CCI.Control Mobile simply exchanges tasks and documentation via e-mail. A connection to the farm pilot portal permits fleet management. The current positions of fleet members are displayed directly in the map. For navigation to the field you can use any navigation app on the tablet.

Compatible

For data exchange with farm management software *CCI.Control Mobile* uses the manufacturer independent ISO-XML format. With *CCI i10* it is possible to use and ISOBUS machine's data on a tablet for the first time. Tractors, implements and self-propelled vehicles gather and make available information on diesel consumption, the worked area, applied products, crops and various filling levels. *CCI.Control Mobile* displays the current values for the driver and stores the information.

Our goal – 100% compatibility



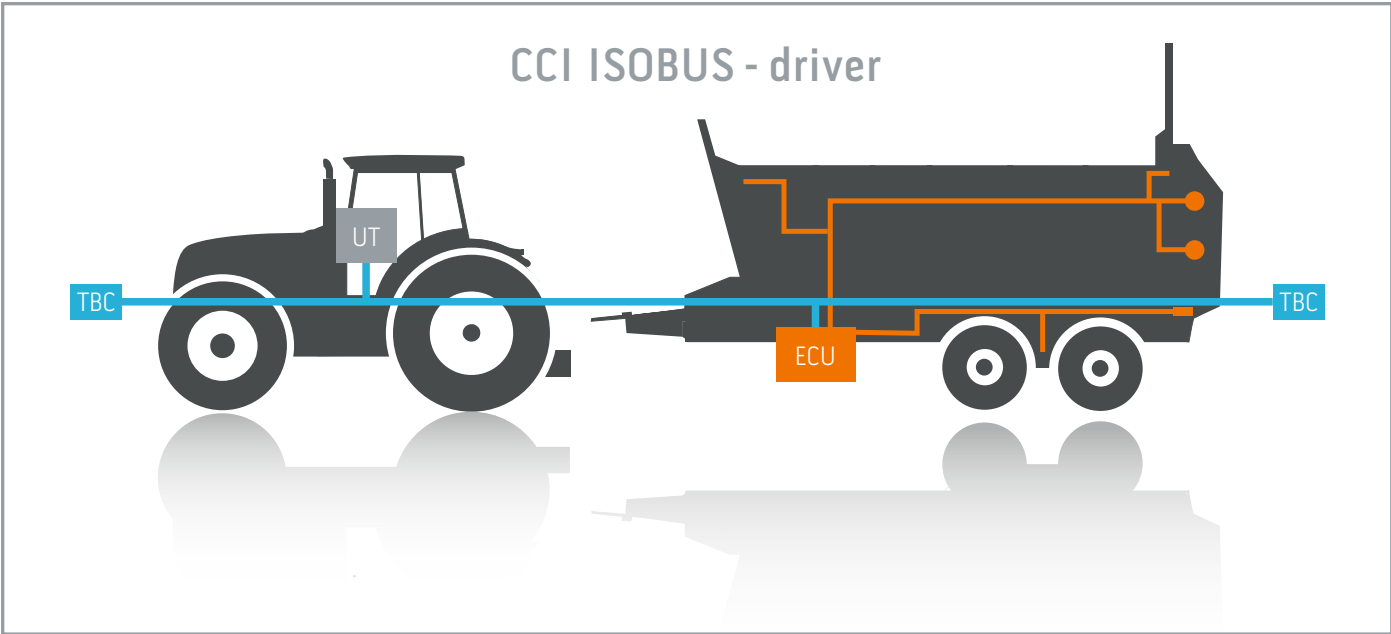
Aiming high

100% compatibility is expected of ISOBUS – and rightly so!
We have accepted that challenge and steadily keep working towards that goal.

Testing

In our state-of-the-art ISOBUS test laboratory the compatibility of implements with a wide range of terminals and the applications running on them is ensured.

Compatibility



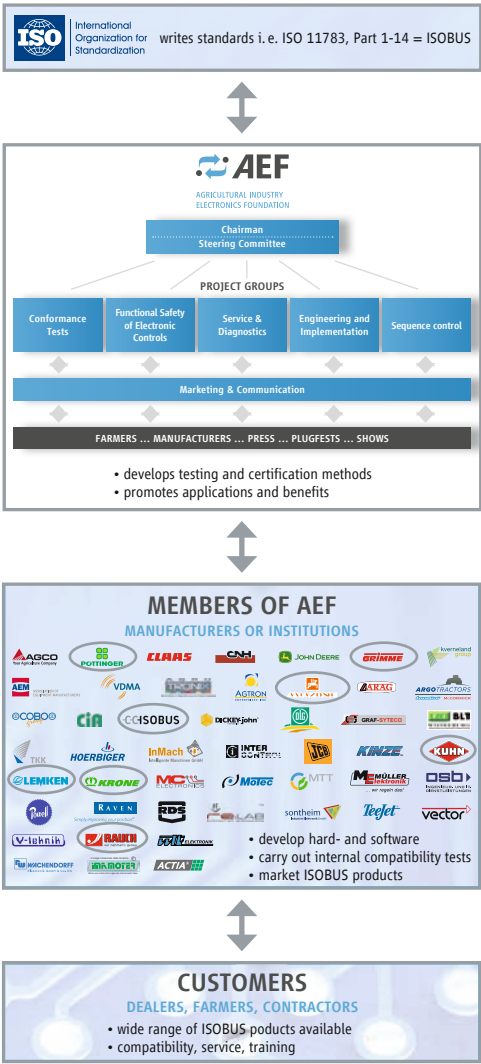
Using the CCI ISOBUS-driver our members guarantee ISOBUS compatibility of their implements. This software-library serves as the link between the manufacturer-specific device electronics and the ISOBUS.

Standardization

The CCI actively engages in both the Steering Committee and in the working groups of the AEF, shaping the ISOBUS-standard and the future of agricultural machinery in the best interest of farmers and contractors.

ISOBUS – from Standard to Realization

Functions of the Institutions Involved



Licensing

TEST FACILITY

CCI classes – practice and knowledge

Recognize potential – utilize advantages

The development of electronic agricultural systems and of the ISOBUS are making huge progress. But only those who know all the possibilities, can make full use of the advantages. We teach basics and give practical advice for your everyday business with ISOBUS – manufacturer independent and adjusted to your needs.

Subject areas:

- ISOBUS basics
- ISOBUS practice
- Data management
- GPS control

Target group:

- Farmers / contractors
- Commerce
- Manufacturers
- Educational institutes

Find topics and dates here:
www.cc-isobus.com/schulungen



What practitioners say:



Benjamin Osterholz
Project engineer
Fa. Bergmann

„The CCI's classes get their topics across in a short and concise manner! They are very interesting, well structured, and, consequently, always worthwhile!“



Sebastian Maimann
DEULA Westfalen-Lippe GmbH
Centre of Education

„I can say that the class is very informative and that it conveys and strengthens the certainty you need to operate the CCI Terminal. Furthermore, you get taught the great variety of applications (CCI.Apps), and you begin to realize what the Terminal makes possible. For me as a technical educator the knowledge I gained is indispensable!“



René Ch. Janotte
LU Agrarelektronik GmbH

„The classes that are offered, and the practical training you receive in the area of current agricultural electric developments and systems are a substantial contribution to a successful integration of innovative concepts to your business. Reaching solutions in the areas of ISOBUS and data management in a great atmosphere and discussion with professionals – it happens right here.“

Amazonen-Werke H. Dreyer GmbH & Co. KG
Grimme Landmaschinenfabrik GmbH & Co. KG
KUHN S.A.
LEMKEN GmbH & Co. KG
Maschinenfabrik Bernard KRONE GmbH
RAUCH Landmaschinenfabrik GmbH

Alois Pöttinger Maschinenfabrik Ges.m.b.H
ANEDO Ltd.
BEDNAR FMT s.r.o.
ECKELMANN AG
GKN Walterscheid GmbH
Hochschule Osnabrück
Jetter AG
Ludwig Bergmann GmbH
Mantis ULV-Sprühgeräte GmbH
Peeters Landbouwmachines B.V.
ROPA Fahrzeug- und Maschinebau GmbH
RT-Systemtechnik GmbH
Zunhammer GmbH

CC-ISOBUS

from february 2014:

Competence Center ISOBUS e.V.
Albert-Einstein-Straße 1
49076 Osnabrück
tel. +49 (0)541 50 79 80 0
fax: +49 (0)541 50 79 80 99
eMail: cci.ev@cc-isobus.com
www.cc-isobus.com

until february 2014:

Competence Center ISOBUS e.V.
Zum Gruthügel 8
49134 Wallenhorst
tel. +49 (0)541 50 79 80 0
fax: +49 (0)541 50 79 80 99
eMail: cci.ev@cc-isobus.com
www.cc-isobus.com